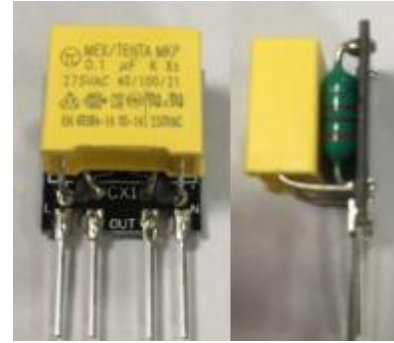


Typical Features

- ◆ Wide input voltage range: 85-305VAC
- ◆ Ensure the power supply module to meet the requirement of CISPR22/EN55032 Class B for EMI
- ◆ Operating temperature: -40℃~+85℃
- ◆ Meet CE, RoHS certification standards
- ◆ Ultra small size, Industrial grade design
- ◆ PCB Mounting



Application Field

LC-05W1D series-----is a filter module provided by Aipu to customers, suitable for occasions that are sensitive to EMI noise. It also has a good surge suppression effect. The maximum input voltage of the AC/DC module power supply used should not be greater than the maximum operating voltage of the filter, and the maximum input current should be less than the rated operating current of the filter.

Typical Product List

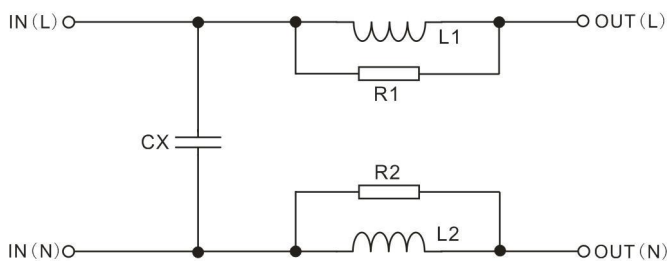
Part No	Input voltage Range(VAC)	Max Rated Current (A)
LC-05W1D	85~305	1.0(≤5W)

Input Specification

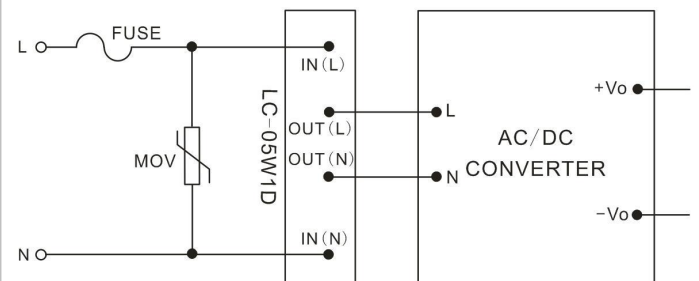
Item	Operating Condition	Min.	Typ.	Max.	Unit
Operating Temperature	--	-40	--	85	℃
Storage Temperature	--	-55	--	125	
Case temperature rise during operation	220VAC@0.05A	--	--	7	
	220VAC@0.10A	--	--	24	

Design Reference

1. Internal schematic

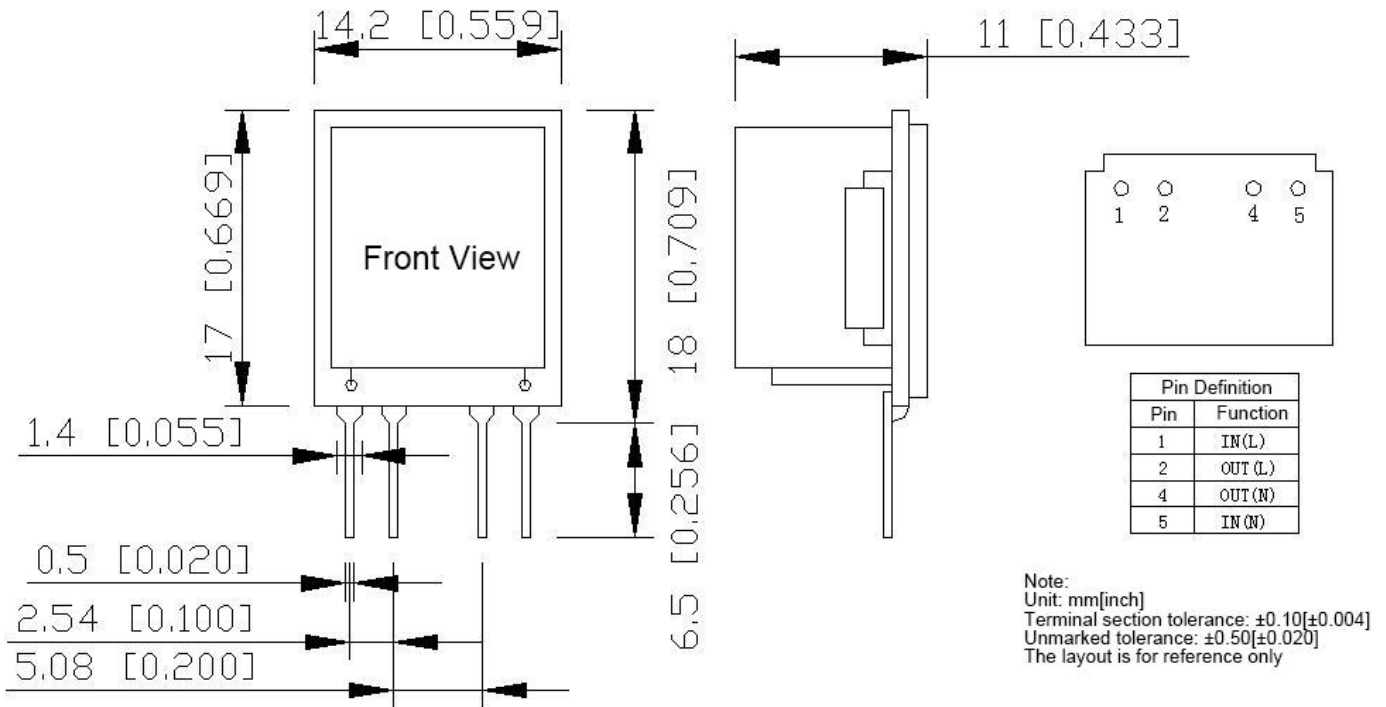


2. Typical application circuit



Dimension

1. LC-05W1D dimension, PCB board reference drawing



Guangzhou Aipu Electron Technology Co., Ltd

Address: Building 4, HEDY Park, No.63, Punan Road, Huangpu Dist, Guangzhou, China.

Tel: 86-20-84206763 Fax: 86-20-84206762 HOTLINE: 400-889-8821

E-mail: sales@aipu-elec.com Website: https://www.aipupower.com